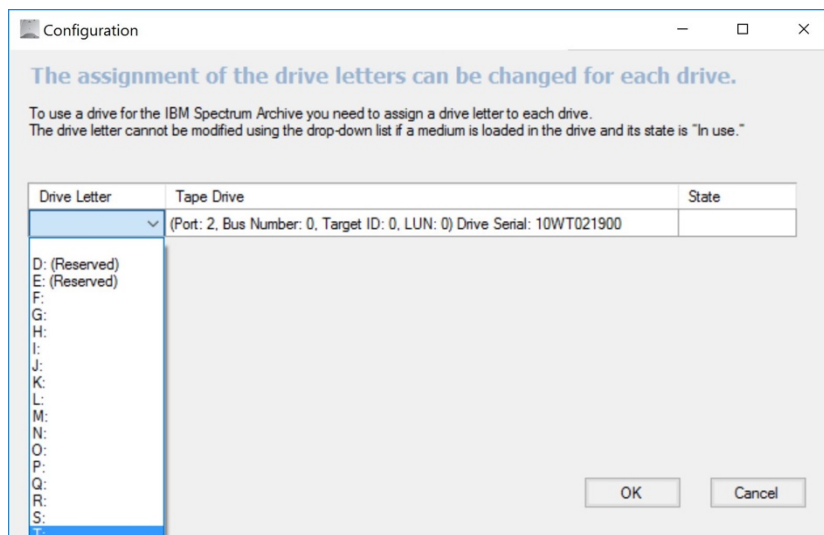


Using IBM Spectrum Archive SDE LTFS Software for Windows with mLogic SAS LTO Solutions

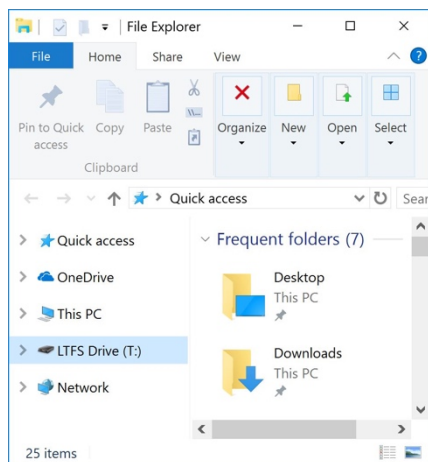
If you have not already done so, install IBM Spectrum Archive SDE LTFS software for Windows before continuing. This software only supports 64-bit operating systems.

1. Click on "LTFSGuiConfigure" (located in the LTFS folder: Program Files > IBM > LTFS) to assign a drive letter to your LTO drive. The following window will appear. Select a drive letter for the LTO. In this case **T:** and click "OK".

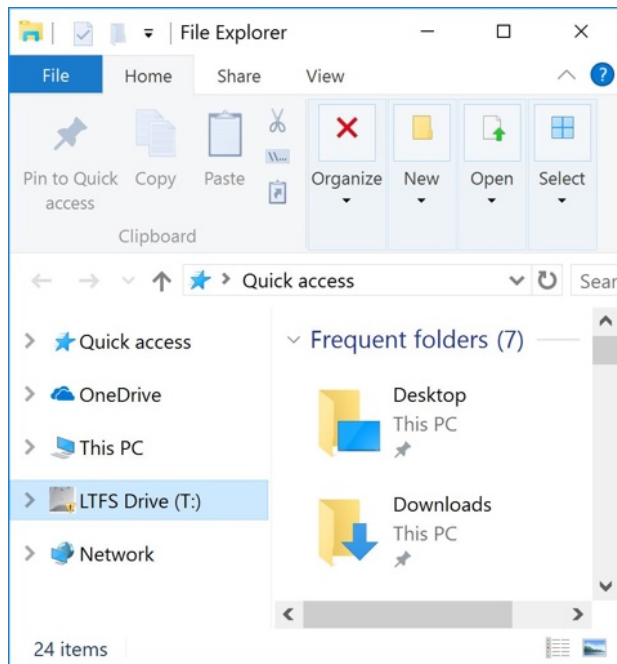
Note: It is best to select a higher letter than just the next available one to avoid potential conflicts with other randomly mounted devices such as an external hard disk or thumb drive.



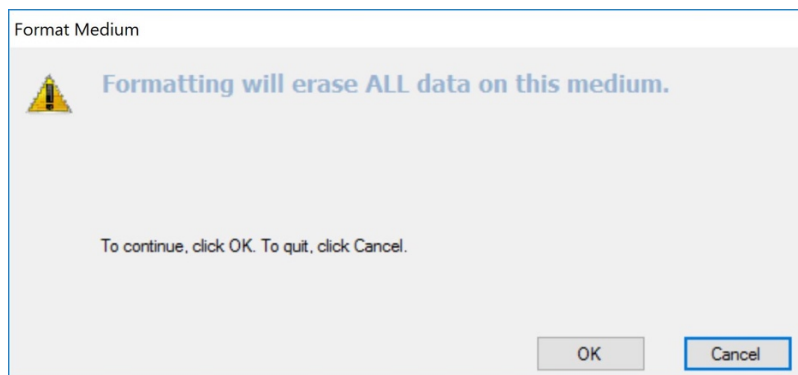
2. The LTO will now show up in File Explorer as shown below.



3. Insert an LTO tape in to the drive. The T: drive now shows a tape cartridge icon as shown below.



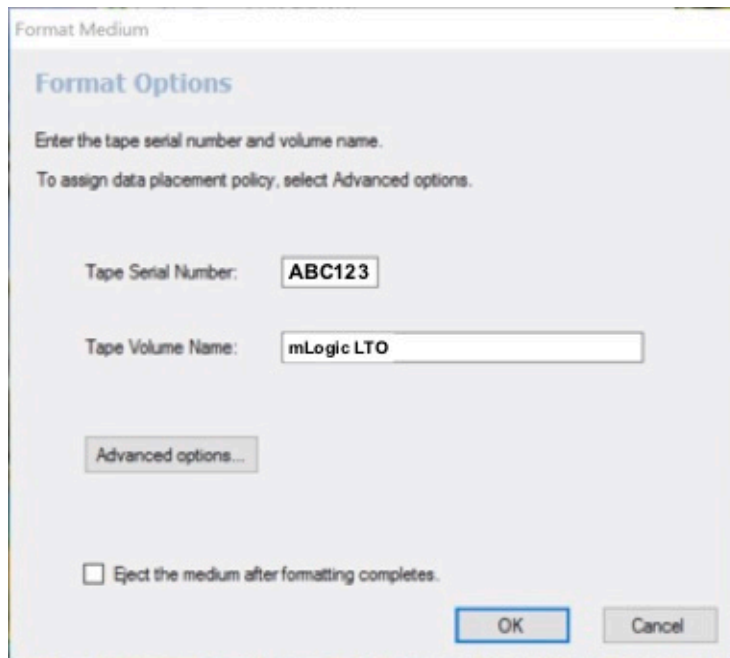
4. Right Click on LTFS Drive (T:), select "Format...". The following window will appear. Click "OK" to continue.



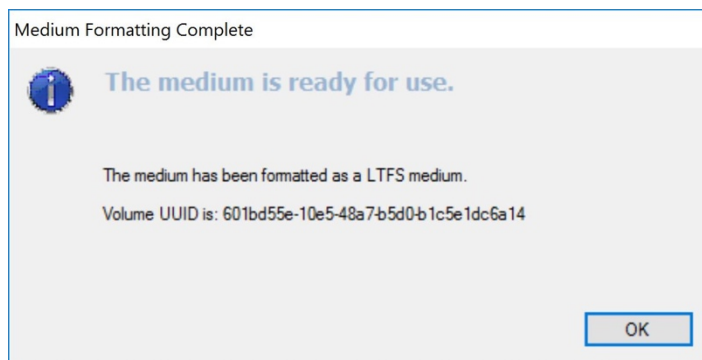
5. The following window will appear. Enter a "Tape Serial Number" and "Tape Volume Name:" and click "OK" to continue.

Note: The tape serial number must be six alphanumeric characters. Only uppercase alphabetical characters are acceptable. For example, "ABC123" is acceptable, but "abc123" is not. To maintain portability between multiple platforms, the following characters cannot be used in Volume Names: * ? < > " | / \

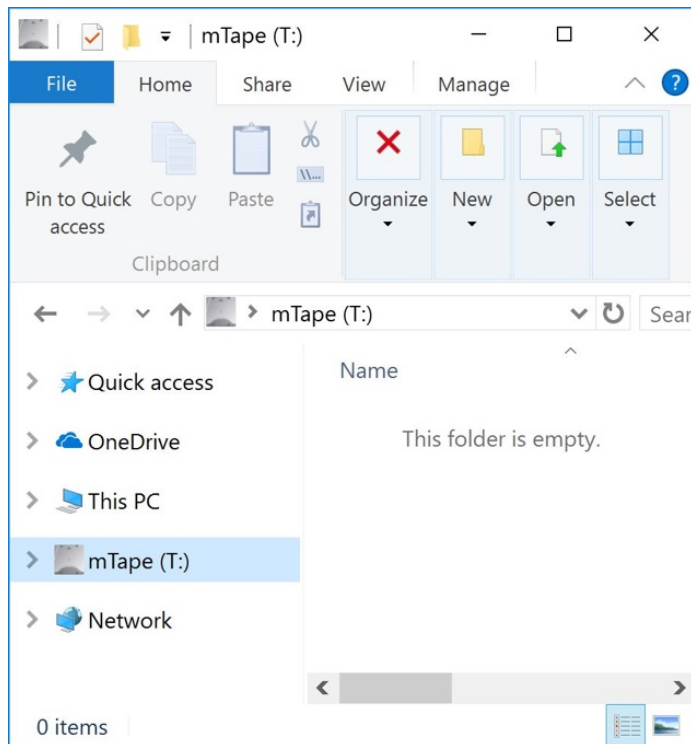
The volume label in Windows Explorer matches the setting that is entered in the Tape Serial Number and Tape Volume Name fields. Once a tape volume name is set, the name is displayed as the volume label. If only the tape serial number is set, the serial number is displayed as the volume label. If neither value is set, the volume label remains blank.



6. The cartridge will be formatted and then mounted. The following window will appear when completed.





7. Your LTO is now ready for use. You can simply drag and drop content to the drive.



8. To eject the LTO tape cartridge, right-click on the assigned drive letter (in this case T:) and select "Eject".

Note: **Always** eject the LTO cartridge as described above. Do not use the button on the front of the LTO to eject. If you eject the tape using the button, the cartridge index may become damaged.

Explanation of LTFS Icons

Medium	Icon	Right-click menu options
The medium is not inserted.		Properties is available. The Check and Rollback buttons are unavailable.
The medium is not ready. One of the following operations is running: load, format, check, rollback, or eject.		Properties is available. The Check and Rollback buttons are unavailable.
The medium is inserted, but it is not a supported medium.		Eject and Properties are available. The Check and Rollback buttons are unavailable.
The LTFS-formatted medium is mounted.		All options are available.
The write-protected LTFS-formatted medium is mounted.		Eject and Properties are available. The Check and Rollback buttons are unavailable.
A write error occurred during the write operation. The LTFS-formatted medium is read-only and must be ejected and reinserted to write data.		Eject and Properties are available. The Check and Rollback buttons are unavailable.
The supported medium is inserted, but it is not formatted for LTFS.		Format , Eject , and Properties are available. The Check and Rollback buttons are unavailable.
The LTFS-formatted medium is inserted, but the data has inconsistencies. A check and recover operation is required to use the medium.		All options are available.