

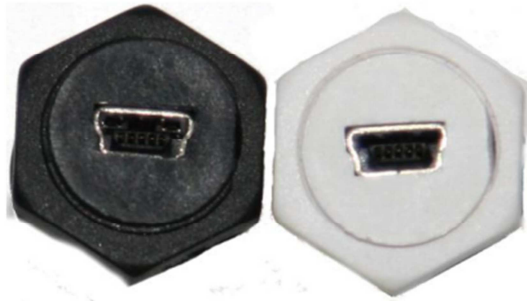
## Types

The BushBaby Covert DVR products come either battery powered, or they need to be plugged in. Check the specific product description of the item you purchased to know which time of power on which your product runs.

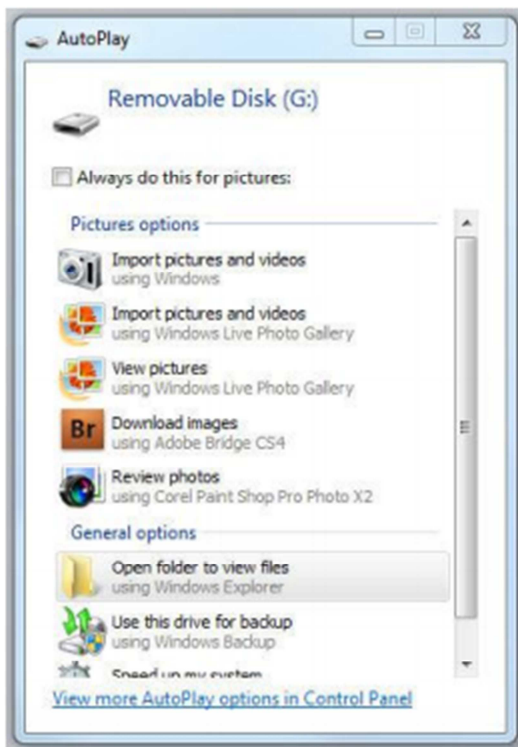
Any dismantling of the products to access the DVR board or memory will void the warranty.

## Figures

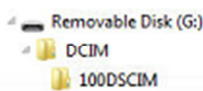
Figure 2



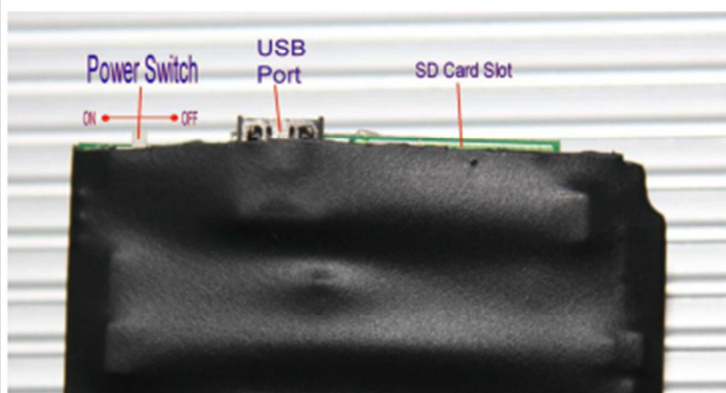
(Figure 3)



(Figure 4)



(Figure 5)



## BushBaby Remote Control Operation Use



**Important:** Pull out the clear plastic shipping tab. This tab extends out of the left side (looking at unit above) of the remote control. The remote will not operate with the tab in place.

### Operation



Press the **Power Button** to turn the DVR device on and off.

Point the remote at the DVR product while standing about 2 feet directly in front of it. Press the power button. (A small green light will appear somewhere on the product. Refer to the product operation for details).

After turning on the device, allow 5 seconds for the device to enter standby mode. The Device will ignore all commands until initialization is complete.



Press the **Video Record** button to start continuous video/audio recording. The light will blink 3 times.

Pressing same button again will stop recording and save the video file and return to the “standby state”



Press the **Motion Detection Recording** button to enter motion detection mode. If a moving object is detected the device will record 3 minutes of video.

If no more motion is detected, the unit will go to motion activated standby.



Press **Still Image** button to take a picture. After the initial button press the unit will save the photo - this will take a second before it is ready to take another. After taking the photo, the unit will return to standby.

## Accessing the Data

### Type 1 Units

Type 1 units allow the removal of the Micro SD card. To remove the Micro SD Card:

1. While supporting the other end of the board, slightly push the SD card **IN** until it stops.
2. Release the SD card and will be pushed out of the slot.
3. You may then remove the SD card. **Note:** (do not remove the SD without doing this procedure).
4. Put the SD card adapter into a compatible card reader attached to the PC.

**Note:** It is recommended to delete/move the files off the SD card before putting back into the DVR.

### USB Connection

Ensure the white switch on the board is in the “On” position. Slide the white switch to the on position. Refer to **Figure 5**.

1. Connect the included USB cable to the DVR unit. The small (USB mini) connector goes into the DVR board.  
**Note:** The mounting of these devices are designed to be light and covert. They are therefore sensitive to excessive force and impact. Please support the opposite side of the DVR board when inserting the USB cable or memory card. If the USB cable is not inserting, please check the orientation of the cable.
2. Connect the other end to your computer USB 2.0 port.
3. Turn on the DVR using the remote control. If equipped, the green power light will turn on.
4. The Computer will recognize the DVR as a removable storage device. **Note:** This may take 10 to 20 seconds depending upon the computer. A screen similar to **Figure 3** will appear.
5. Click “Open folder to view files”.
6. A Windows explorer window will open and show the contents of the DVR memory. (**Figure 4**).
7. The recorded files are located in the directory. From here you can:
  - Play them directly from the DVR.
  - Copy the files to the PC.
  - Delete some or all of the files.
8. When you are finished, unplug the USB cable from the DVR. The DVR will then turn off automatically.

### Type 2 Units

Type 2 units are sealed and **do not** allow direct access to the internal memory.

### USB Connection

**Note:** For Type 2 units that are not battery operated, it is required that the products power cord be plugged into an AC outlet to operate the DVR. The DVR **will not** run on USB power.

Locate the USB port on the product. They will look like one the two ports in **Figure 2**. Generally on the back or bottom.

## Changing the Date Stamp

You must use the "writetime.exe" program to write time files to the DVR. Most sealed unit come with this software preloaded. The program will be in the root directory of the memory card in the DVR. If it is not there, please contact the dealer you purchased it from. Most dealers provide a link to download the software.

## BushBaby: Notes And FAQ

### Operating

#### Question:

What Happens is the memory card fills up?

#### Answer:

If the memory card fills up while recording video, the oldest file on the card will be deleted and a new file will be created. Video recording **will not** stop once the card is full.

Ex: If the files on the card are Pict0001, Pict0002, Pict0003, Pict0004, Pict0005, Pict0006, Pict0007, and Pict0008 and there is no more room to save another complete file; the file Pict0001 will be deleted. File Pict0009 will then be created and video recording will continue.

**NOTE:** Once the video file has been deleted in this manner, it cannot be recovered.

#### Question:

Why does the green light flash on the device when it is in Motion Detection mode?.

#### Answer:

The blue light will flash 3 times to indicate that motion has been detected. This denotes a new 3 minute cycle of recording. This should not be an issue, as most electronic devices today have LEDs that blink or flash.

**NOTE:** If the Indicator light is covered up, power and standby states cannot be determined easily.

#### Question:

Will this work my Mac?

#### Answer:

Yes, the recording formats used are compatible with Mac and Windows operating systems.

#### Question:

How do I charge the battery?

#### Answer:

Plug the included USB (mini end) into the DVR board. Plug the other end into the included power converter OR a USB port on a PC (PC must be running). Either way will charge the DVR.

## Included with product.

### Accessories

The BushBaby Covert DVR are shipped with certain accessories. Please let your dealer know if any of these are missing.

1. Wall charger: **(included with battery operated units only)** Use with USB to connect to unit to charge the battery.
2. Remote Control Unit. This is required to operate the DVR.
3. USB cable: This is used for:
  - Connecting device to PC to access memory
  - Connecting to wall charger to charge the battery.
4. Instructions on DVR operation.
5. Accessories related to the other functions of the product will vary depending upon product purchased.



### BushBaby DVR Board Technical Specs

<b>Resolution</b>	1280*960
<b>Video Format</b>	.AVI
<b>Photo Format</b>	.JPG
<b>Frames per Second</b>	30fps
<b>Vision Angle</b>	72°
<b>Induction Photographing</b>	6 meters for straight-line distance
<b>Minimal Illumination</b>	1LUX
<b>Remote Operating Distance</b>	15 meters
<b>Scope for Sound</b>	40 meters
<b>Power Requirements</b>	130MA / 3.7V DC
<b>Storage Temperature</b>	-4° – 176°F
<b>Working Temperature</b>	14° – 140°F
<b>Working Humidity</b>	15–85% RH
<b>USB Interface</b>	2.0 USB
<b>Operating Systems</b>	Windows 2000 Windows XP Windows Vista Windows 7 Mac OSX
<b>Video Recording Files</b>	Full Video: 20 minute files Motion Video: 3 minute files
<b>Memory</b>	MicroSD Card or Internal Storage
<b>SD Card Format</b>	FAT32
<b>File Allocation</b>	32KB
<b>Recommended Speed</b>	Class 6 or above
<b>Time Consumed of Storage</b>	1GB/20 minutes
<b>Charging Time</b>	Approx. 4 hours