



Release Notes
Winter 18

Table of Contents

[Highlights](#)

[Header & Navigation](#)

[Removing the Left Hand Navigation Bar](#)

[Labelled Icons](#)

[External Links](#)

[Help link moved to Footer](#)

[Home & Sites Dashboards](#)

[Carousel](#)

[Albums in the Carousel](#)

[External Content in the Carousel](#)

[Adding Tiles](#)

[Grouping of Tile types](#)

[All Content Tiles](#)

[Display Style Variations](#)

[Number of Items in Tiles](#)

[Combining Tile Types](#)

[Latest & Popular](#)

[Favorites Tile Option](#)

[Activity Tile](#)

[Sites I Manage Option](#)

[Removed Activity page](#)

[Search Speed](#)

[Events - reminders in .ics files](#)

[Site Owner/Managers](#)

[Google Drive Integration](#)

[Site Storage Settings](#)

[Site Root Folder automatic transfer](#)

Simplr Winter 18 Overview

The following release notes split major Winter 18 improvements across the two personas of Standard User and Site Owner/Manager.

Highlights

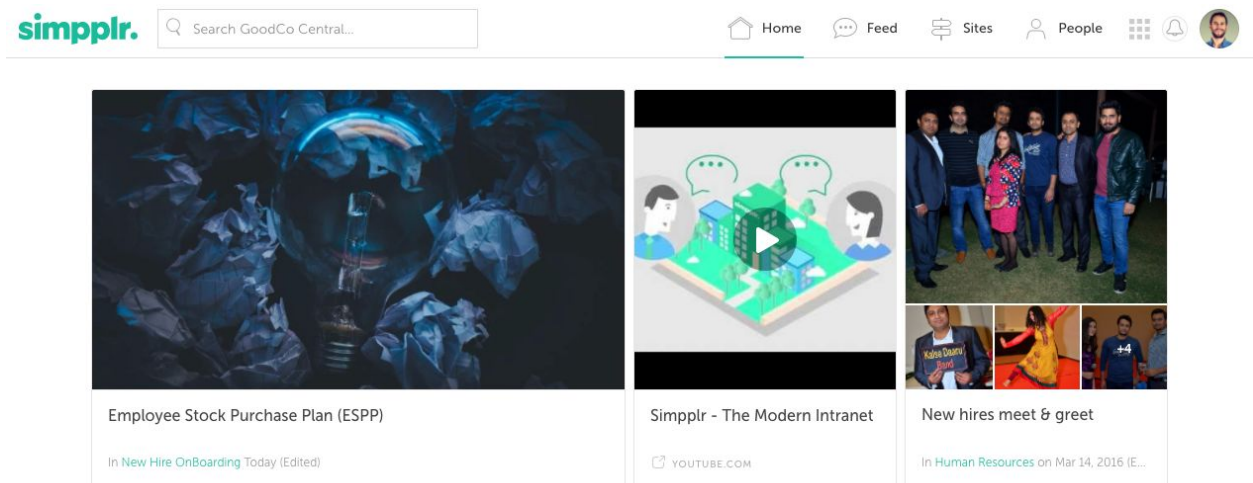
- [Header & Navigation changes](#) - We've completely redesigned the main navigation, moving it all to the header and removing the left hand navigation bar.
 - [Carousel Redesign](#) - With multiple visible items, embedded external content, and an overall design overhaul the Carousel is now very much new and improved!
 - [Tiles improvements](#) - Tile designs are now more varied and dynamic, with more styling options to choose from.
 - [Search Speeds](#) - We've made the Search up to 6x faster!!
-

Standard Users

The following notes cover major improvements for Standard Users.

Header & Navigation

The header and navigation have been completely redesigned to improve User's movement through the App.



Removing the Left Hand Navigation Bar

One of our biggest changes to the overall design in this release is the removal of the left hand navigation bar.

Problem:

- Previously navigation was split between the header and the left hand navigation bar. Due to a lack of clear hierarchy between the two this meant that the user experience could be confusing at times.

Solution:

- Now all of the navigation is contained in the header, making it simpler to use and easier to understand.

Problem:

- Previously when the left hand navigation bar expanded it sometimes covered part of the App logo and either Content Tiles or your Feed (depending on your selected layout).

Solution:

- Now the left hand navigation bar has been removed this does not happen.

Labelled Icons

Problem:

- Previously the main navigation was mostly shown only through icons, relying on the User to remember the meaning of each icon if they wanted to quickly move through the App.

Solution:

- Now all of the navigation icons are labelled. We have also reduced the number of visible navigation options. 'Add Content', 'Events' and 'Favorites' have been moved under the User Menu, which has also been redesigned to give a clearer sense of hierarchy in the options.



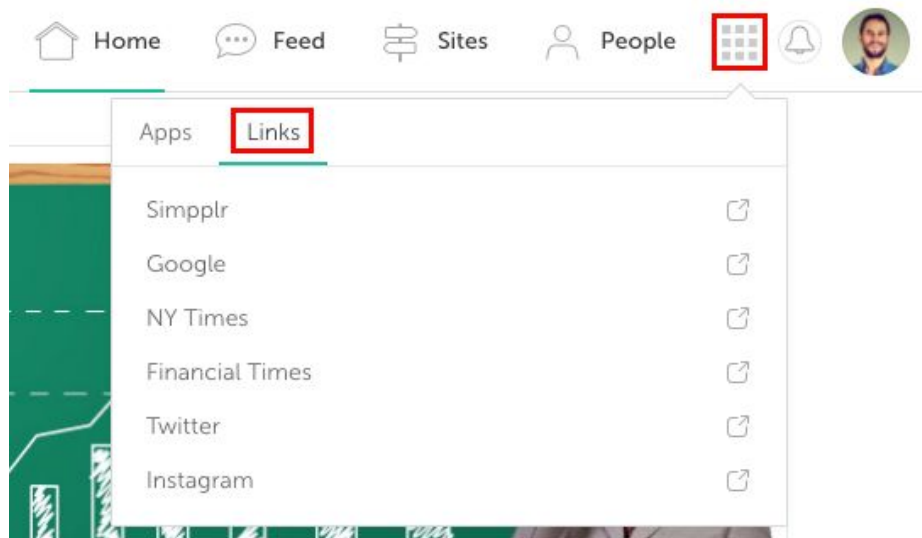
External Links

Problem:

- Previously App Managers could add a maximum of 3 external links to the navigation.

Solution:

- Now we have moved the external links to the drop down Launchpad menu under a separate tab labelled 'Links', this means that there is no longer a limit on the amount of external links that can be added.



Help link moved to Footer

As part of the Header and Navigation redesign we have removed the '?' icon from the header and replaced it with a 'Help' link in the Footer. This will take users through to our main support page.

Home & Sites Dashboards

The design of the Home & Sites Dashboards has been given a complete overhaul, improving user experience at the primary point of engagement.

Carousel

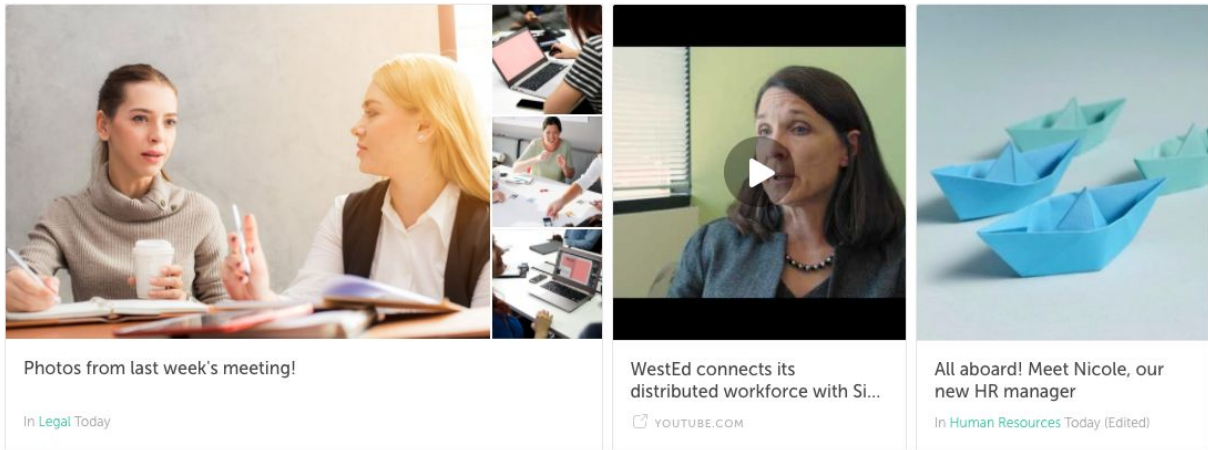
Problem:

- Previously the Carousel only displayed one piece of Content at a time.

Solution:

- Now three pieces of Content can be visible at any time in the Carousel, allowing greater visibility of the Content with less pagination for the User.
 - If there are more than three items the User can manually scroll through the Carousel as before.
 - The Carousel will also automatically scroll on a continuous loop.
 - If there are less than 3 items in the Carousel then only the items that have been selected will be included.
 - The image used in the Carousel is the same image that is used in the original piece of Content. The recommended image size is 1120 x 630 px (and a minimum of 664 x 373.5 px).
 - The second and third images used in the Carousel are based on the 'Square Crop for Thumbnail' image in the original Content, with some cropping to make it fit.

- Because the left hand navigation bar has been removed the space for the Carousel has increased.



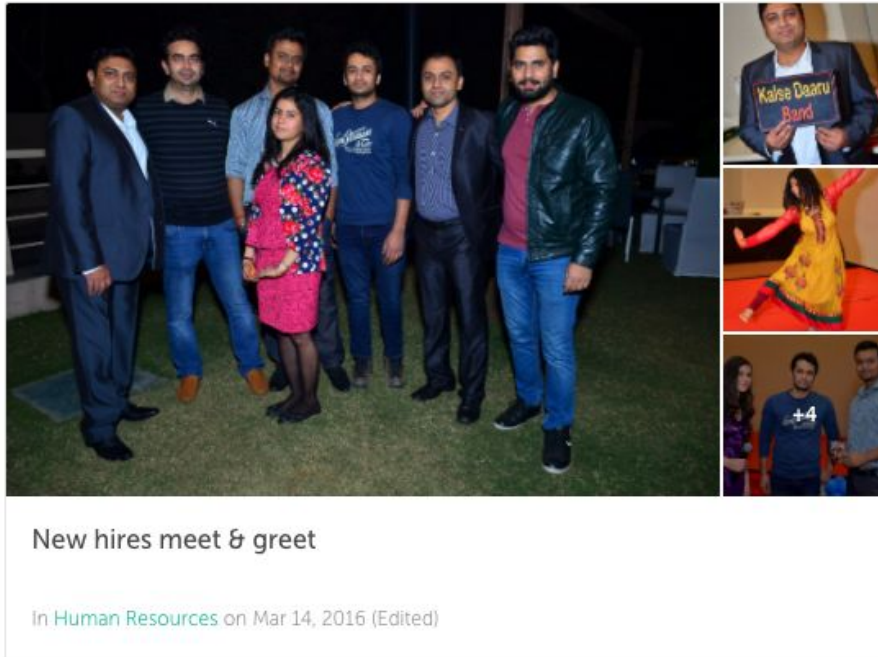
Albums in the Carousel

Problem:

- Previously when Albums were added to the Carousel only one image from the Album was shown.

Solution:

- Now a gridview will display the cover image and the three most popular images from the Album.



Problem:

- Previously when you clicked on an Album in a Carousel you were taken to the Album Detail Page, taking you away from your Dashboard.

Solution:

- Now clicking on an Album in the Carousel will open the slideshow view of the Album, which allows images to be viewed, liked and shared. Closing the slideshow will return you to the Dashboard. If you click on the Album name you will still be taken to the Album Detail Page.

External Content in the Carousel

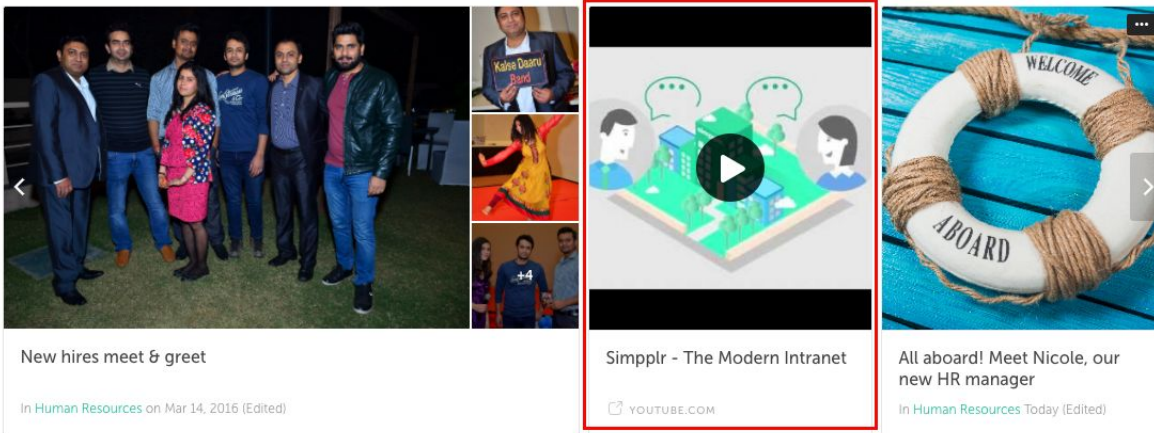
Problem:

- Previously only Pages, Events, Albums & Blog Posts could be added to the Carousel.

Solution:

- Now external URLs and videos can be added to the Carousel. In the Manage Carousel modal you can type or paste a URL for any website and this will then be rendered in the Carousel.

- If the website that you are adding supports Embedly (see their extensive list of providers here - <http://embed.ly/providers>) the content will be embedded in the Carousel. For example this could be a video from Youtube, Vimeo, Wistia, Vidyard or vBrick, if you click on the video it will start to play.



Adding Tiles

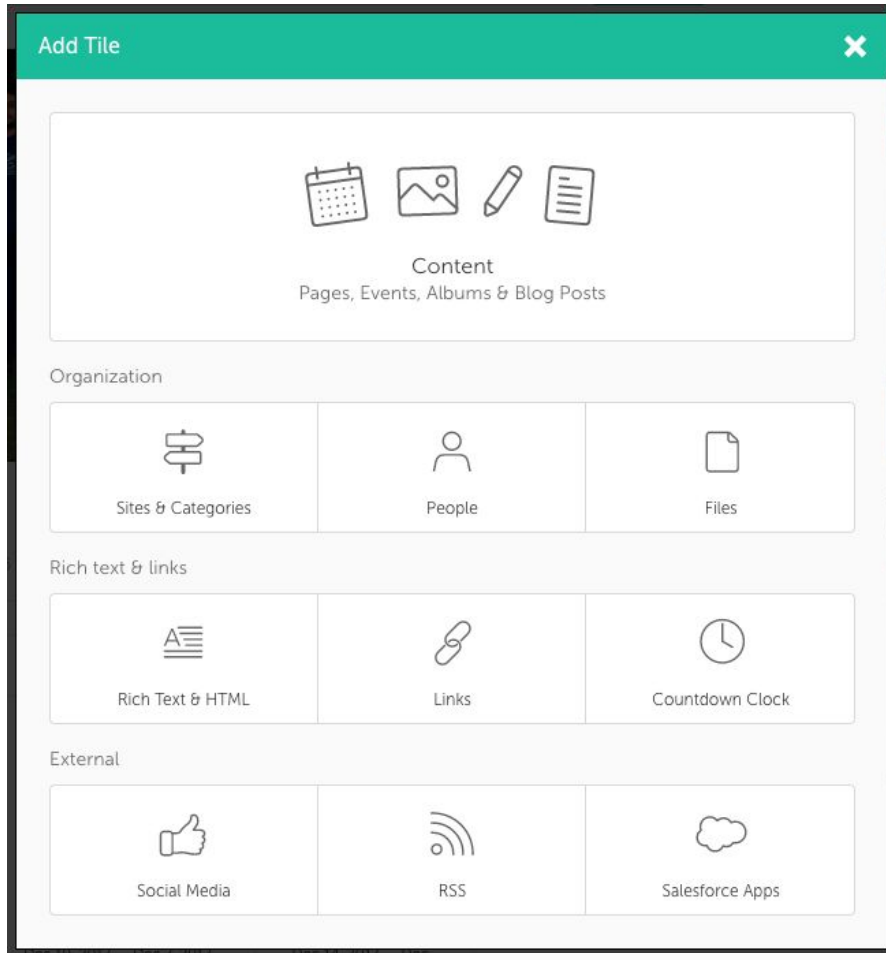
Grouping of Tile types

Problem:

- Previously in the Add Tiles Modal the Tile options were organised alphabetically with no clear hierarchy, this slowed down the process of selecting Tiles.

Solution:

- Now the Tiles are grouped with similar Tiles, making it much easier to find what you are looking for.



All Content Tiles

Problem:

- Previously Content Tiles could only contain one type of Content, either Albums, Events or Pages.

Solution:

- Now you can choose to create Tiles containing all types of Content. You can also still create Tiles containing just one Content type.

Add Content Tile ✕

Latest & Popular Custom

Tile title: *
Latest & Popular

Content Type

<input checked="" type="checkbox"/> All	<input type="checkbox"/> Pages	<input type="checkbox"/> Events	<input type="checkbox"/> Albums	<input type="checkbox"/> Blog Posts
---	--------------------------------	---------------------------------	---------------------------------	-------------------------------------

From

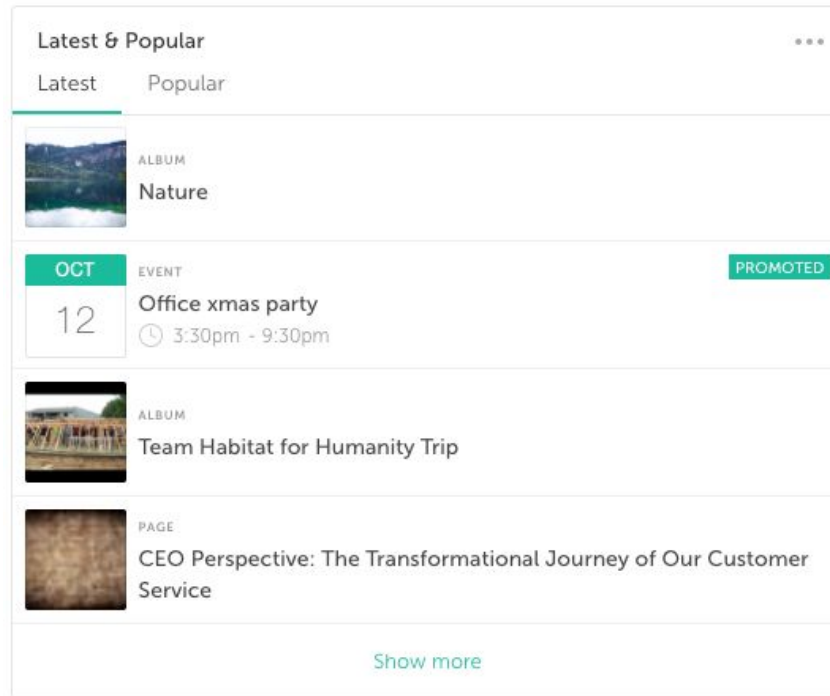
From Sites, People & Topics I follow From a Site

Tile layout

Standard Showcase

Add to all users Home

[← Back](#) [✓ Add Another](#) [✓ Add to Dashboard](#)



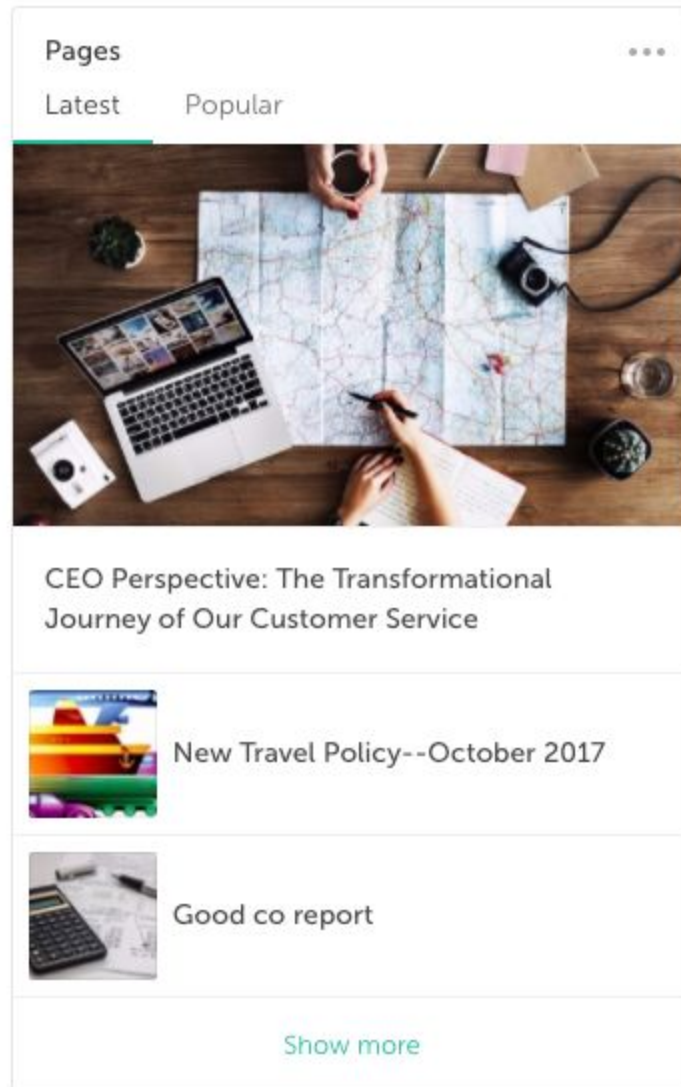
Display Style Variations

Problem:

- Previously Tiles showing Content always followed the same design.

Solution:

- Now there are two display options for Content Tiles. 'Standard' which is the same as the display style used in previous versions and 'Showcase' which will show larger image previews and a richer, more dynamic layout.



(Showcase display option)

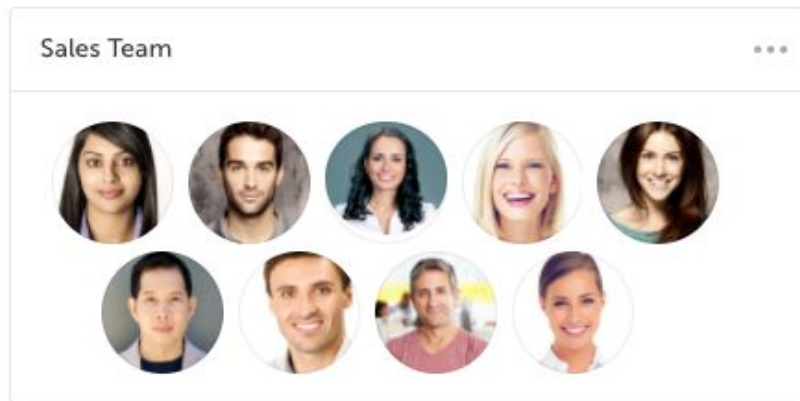
Problem:

- Previously Tiles showing People all followed the same design.

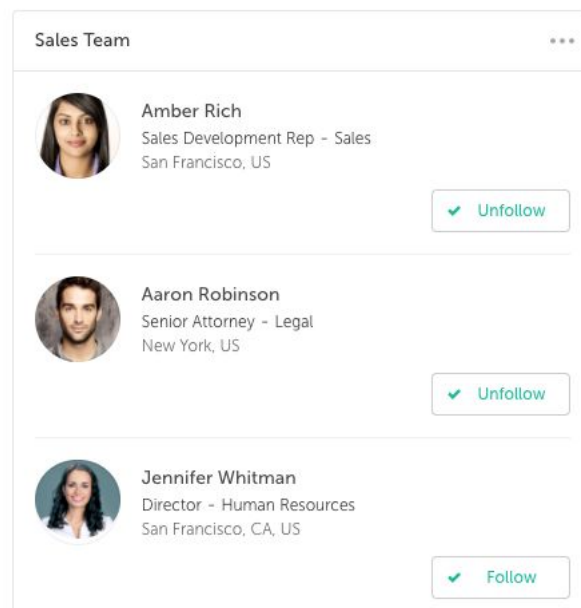
Solution:

- Now as well as improving the design of the standard People Tiles we have also added extra display options for the Custom People Tile on the Home Dashboard, and the Site Manager Tile and Custom People on the Site Dashboard.
- You can now choose between:-
 - Avatar layout

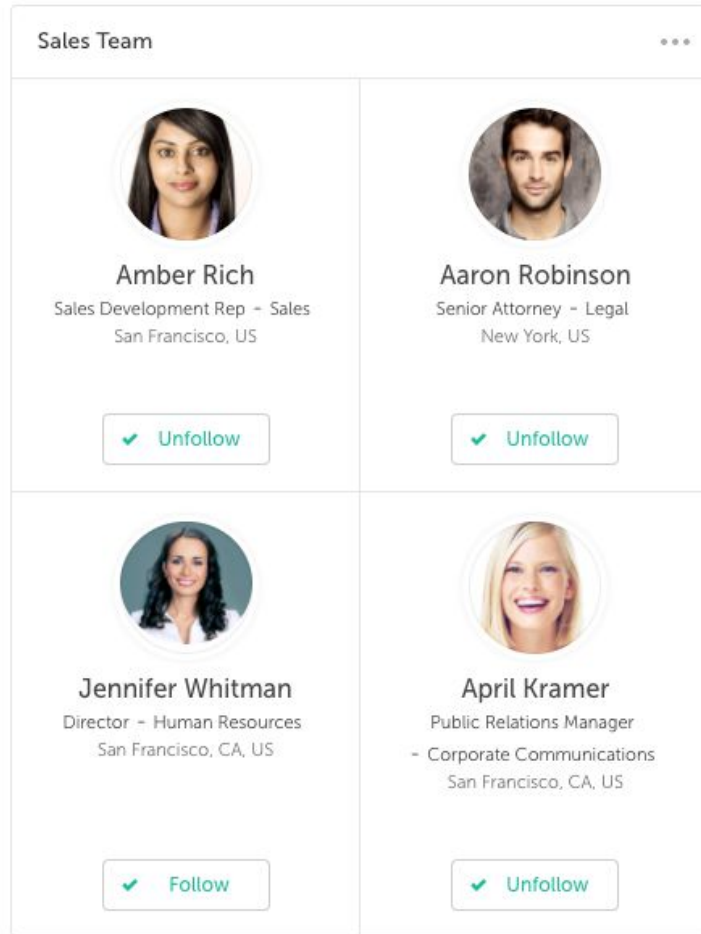
- Grid layout
- List layout.



(Avatar display option)

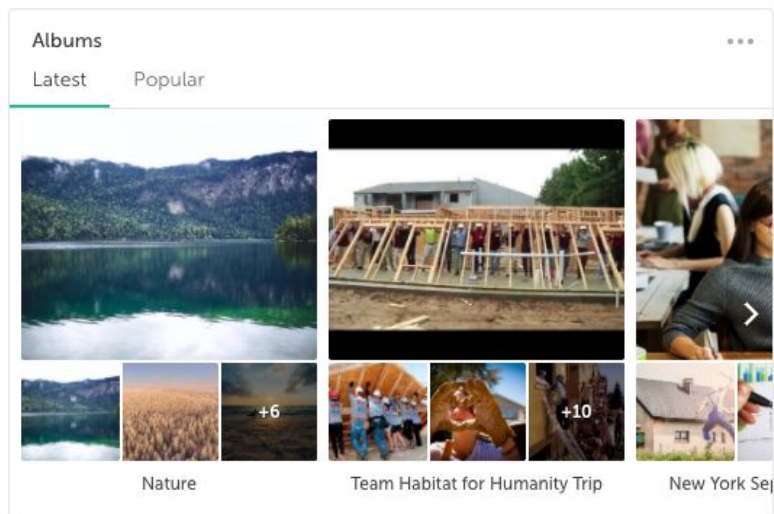


(List display option)



(Grid display option)

- We've also improved the design of the Album Tiles.



Number of Items in Tiles

Problem:

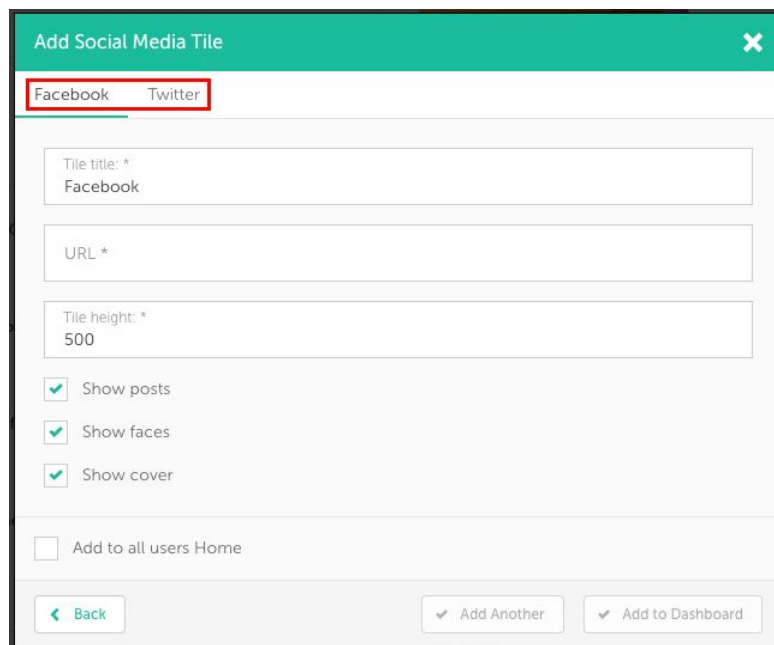
- Previously when creating Tiles, Users were often given the option to decide how many items would be displayed in the Tile. This had the potential to result in Users missing items because they did not fall within the amount selected.

Solution:

- Now the User cannot select how many items will be visible, instead if there are more than four items that can be displayed in a Tile an option to 'Show more' is given at the bottom of the Tile. Clicking 'Show more' will display another four items. If there are more than eight items another 'Show more' button will be visible, this behaviour will continue with a maximum of 18 items being displayed.
- The number of items in Custom Tiles will still be defined by the amount of items that you select when creating the Tile.

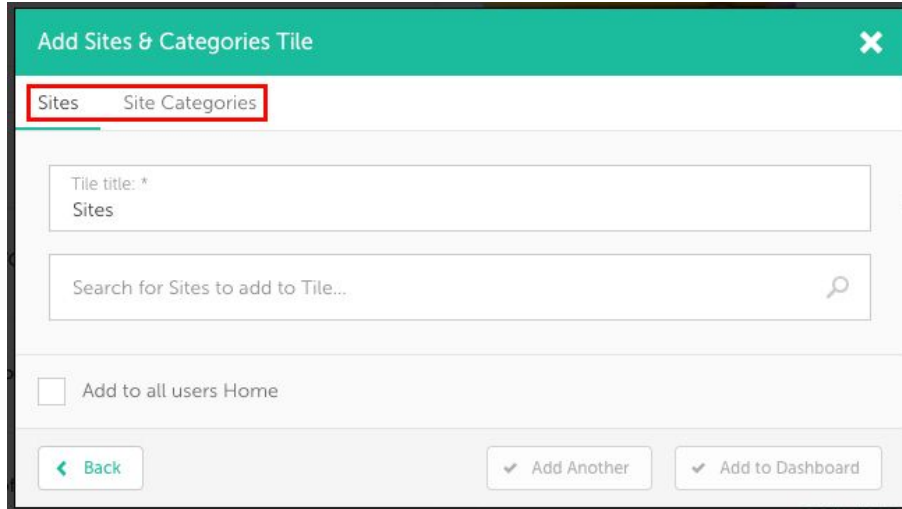
Combining Tile Types

To improve the layout of the Add Tiles Modal the Facebook and Twitter Tiles options have been combined under the heading 'Social Media' and Sites and Site Categories have been combined under the heading 'Sites & Categories'.



The screenshot shows a modal titled "Add Social Media Tile" with a close button (X) in the top right corner. Below the title, there are two tabs: "Facebook" and "Twitter". The "Facebook" tab is selected and highlighted with a red box. The form contains the following fields and options:

- "Tile title: *" with the value "Facebook"
- "URL *" (empty)
- "Tile height: *" with the value "500"
- Three checked checkboxes: "Show posts", "Show faces", and "Show cover"
- An unchecked checkbox: "Add to all users Home"
- At the bottom, there are three buttons: "Back" (with a left arrow), "Add Another" (with a checkmark), and "Add to Dashboard" (with a checkmark).



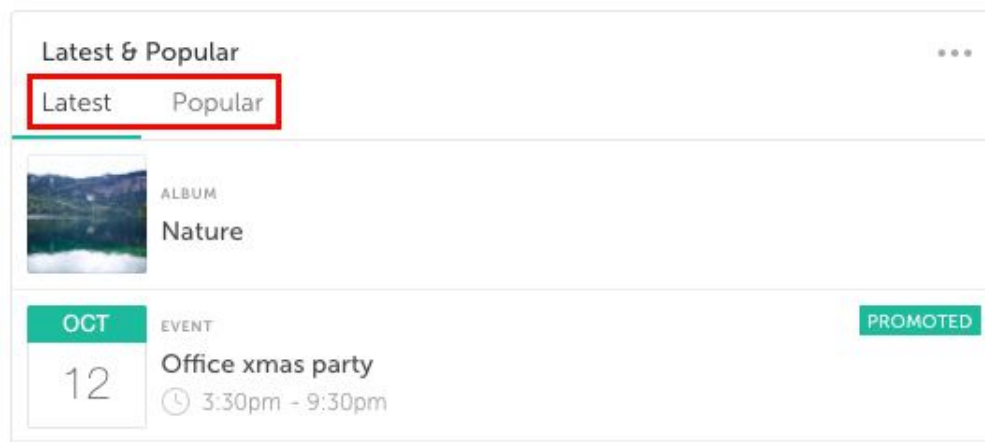
Latest & Popular

Problem:

- Previously Users had to choose between showing either the Latest or Popular items from each type of Content.

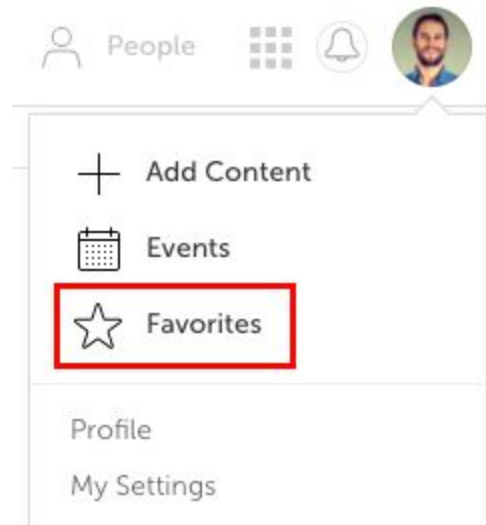
Solution:

- Now Content Tiles contain Latest and Popular tabs so that Users can easily switch between the two filters. The Tile will default to the Latest filter.



Favorites Tile Option

The Favorites option for Content Tiles, Albums, Blog Posts, Events and Pages, Sites Tiles and People Tiles has been removed. Any existing Favorite Tiles will not be migrated over when you install the new version of the App. All favorited Content can be accessed via the dropdown User Menu.



Activity Tile

The Activity Tile has been removed. Existing Activity Tiles will be migrated when you install the new version of the App, however they will now include two tabs for Latest and Popular items to match the behaviour of the new Content Tiles.

Sites I Manage Option

The Option for a Site Tile including Sites that you manage has been removed. Existing 'Sites I Manage' Tiles will be migrated when you install the new version of the App, however they will be converted to Custom Sites Tiles, so any changes that you make to the Sites that manage will not automatically be updated, you will need to manually edit the custom Tile to update any changes. Also a new Tile that includes all of the Sites that you manage can be created using a Custom Sites Tile.

Removed Activity page

Problem:

- Previously the Activity page listed recent Content from throughout the App, however much of this Content would be duplicated on the Homepage in Content Tiles. In practise our usage analytics have shown that the Activity Page is not very widely used.

Solution:

- Now we have removed the Activity page to focus on improving the Homepage and avoid unnecessary duplication of Content.

Search Speed

Problem:

- Previously our search function could be a bit slow at times in returning results.

Solution:

- Now the search function has been completely re-architected resulting in searches that are up to 6x faster!
-

Search Results Page Redesign

As part of making the search faster and to make it easier to find what you are looking for we've redesigned the Search results page.

- We have removed the Follow and Favorite buttons from all search results listing.

Top Tab

The new Top Tab combines the most relevant search results from different sources split into two sections.

In the left hand column the 16 top results from Sites, Content and People are shown, ordered by relevance.

- Items that have been matched because of their topic are labelled 'Topic Match'. This label is also shown on relevant results in the Content tab.
- People that have been matched because of their expertise are labelled 'Expertise Match'. This label is also shown on relevant results in the People tab

The right hand column shows the file results from the search, split into sections for each file host.

Content Tab

The new Content Tab displays search results from Albums, Events, Pages and Blog Posts in order of relevance.

Searched for: "Product"

Top Sites (2) Content (11) People (2) Intranet Files (2) Feed

- TOPIC MATCH** MUST READ
CEO Perspective: The Transformational Journey of Our Customer Service
You think you've had customers who complain forever. Ha! That clay tablet pictured up ther...
In [Ryan's Room](#) Today (Edited)
- PAGE**
Spring product lineup announced at Goodco World Expo 2016
Just in time for the spring and summer months, Goodco, a global leader in technology, is in...
In [Product Management](#) on May 16, 2016
- SITE**
Product Management
- SITE**
London
London drives our product design. All about London team and office is here.
- ALBUM**
Photos from last week's meeting!
Some photos from the meeting last week! Good work everyone! Very productive!
In [Legal](#) on Nov 30, 2017
- PAGE**
IT FAQ / Apple Laptops
Check out this FAQ for answers to all your most common questions to get set up and be pr...
In [Information Technology](#) on Dec 15, 2016
- PAGE**
Customer survey templates and resources
Below you will find links to several useful templates that can help you get up and running, g...
In [Product Management](#) on Mar 13, 2016 (Edited)
- PERSON** **EXPERTISE MATCH**
Erica Kane
Vice President, Customer Success
- Customer Service
San Francisco, US
[415 555 4215](tel:4155554215)
simpplr.dev+erica.kane@gmail.com

Intranet Files (2)

- PDF** **IRS Publication 969.pdf**
In [Human Resources](#)
- PDF** **Guide to Life Insurance.pdf**
In [Human Resources](#)

Events - reminders in .ics files

Problem:

- Previously when you created an Event, then selected Add to Calendar > Add to Calendar App the .ics file that you could download did not include any default reminder

settings. Each user attending the Event would have to manually set their own reminder. This could lead to people missing Events.

Solution:

- Now the .ics file includes a default reminder. Whichever calendar app the User adds the event to will show a pop-up reminder 10 minutes before the Event starts.

Site Owner/Managers

The following notes cover major improvements for Site Owners/Managers.

Google Drive Integration

For a full explanation of our Google Drive Integration please see the following article:-
<https://support.simplr.com/customer/en/portal/articles/2887507-how-to-integrate-simplr-with-google-drive>

Site Storage Settings

Problem:

- Previously if Storage was set to Site Level by the App Manager, the Site storage could be set to Google Drive by System Admins, App Managers, Site Managers and Site Owners, however until the Site Owner had connected to Google Drive themselves the Site would not be connected, this could lead to some confusion.

Solution:

- Now only Site Owners can change the Site storage settings to Google Drive. As stated above the Site Owner has to have connected their Google Drive.

Site Root Folder automatic transfer

Problem:

- Previously if Site ownership was transferred the Site Root Folder had to be transferred manually in Google Drive.

Solution:

- Now the Site Root folder will be automatically transferred when ownership of the Site is changed.
- If the new Site Owner is connected to Google Drive, the Site Root Folder's location will be changed to their My Drive and they will take over ownership of the folder. All of the files and folders within the Site Root Folder will also be moved to the new location.
- If the new Site Owner has not connected to Google Drive a warning message will be displayed to advise them that the Site Root Folder will be lost.