

SENSOR UPDATE GUIDE



The Smartmarker Sensor has user updatable internal software that is revised over time, for general improvements and adding new features. This guide will walk you through the simple process of updating the sensors software.

Requirements

- Windows PC with Windows 7 or 8
- Your Smartmarker Sensor
- Your Smartmarker USB cable (short or long)

Sensor Software

EquilSmartMarkerUpdater.zip
(download from support.myequil.com)

Windows PC



Smartmarker Sensor



Short Cable



Or Long Cable



Part One

Download EquilSmartMarkerUpdater.zip from support.my-equil.com and unzip the file into a new folder on your Windows computer.

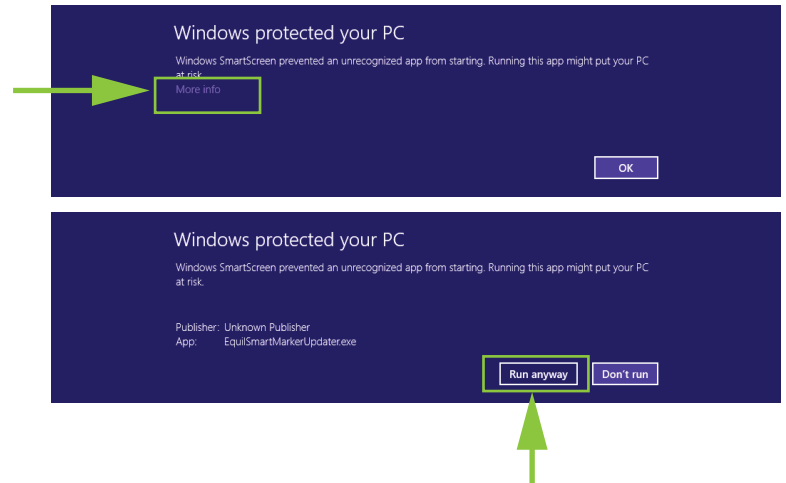
EquilSmartMarkerUpdater.zip

(download from support.myequil.com)

Part Two

Launch the EXE (EquilSmartMarkerUpdater.exe)

Note: Depending on your Windows settings, you may need to allow launching by choosing "More info" and then choose "Run anyway".



Part Three

Following the guide in the updater window, proceed through each step carefully.

Step 1:

Turn off the sensor power before connecting the USB cable to your computer.

Then connect the USB cable.

Step 2:

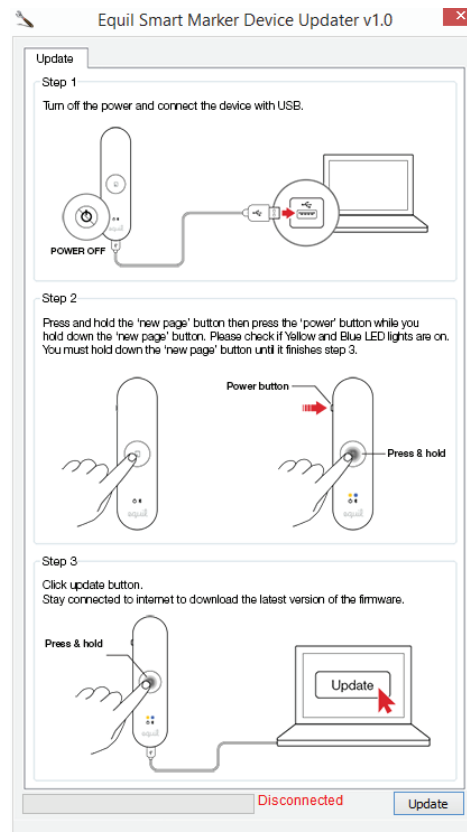
Press and hold the new-page (center) button with one hand while pressing the sensor power button with the other hand.

Release the power button but continue holding the new page button.

Step 3:

Click the "Update" button in the updater tool's window.

A progress bar will appear. When it finishes, you may release the new page button on the sensor.



The sensor is now updated and ready for use.